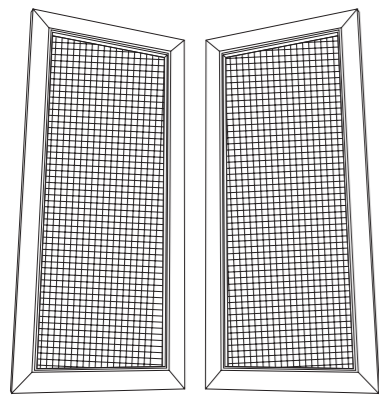
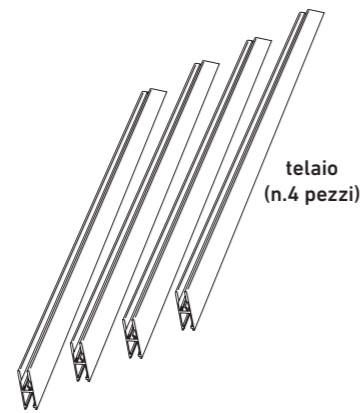


# ZOE

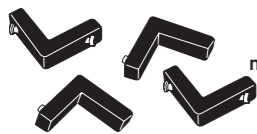
## Istruzioni di montaggio



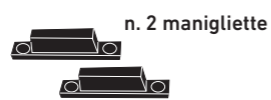
n. 2 ante



telai  
(n.4 pezzi)

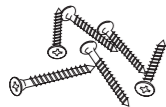


n. 4 squadrette



n. 2 maniglie

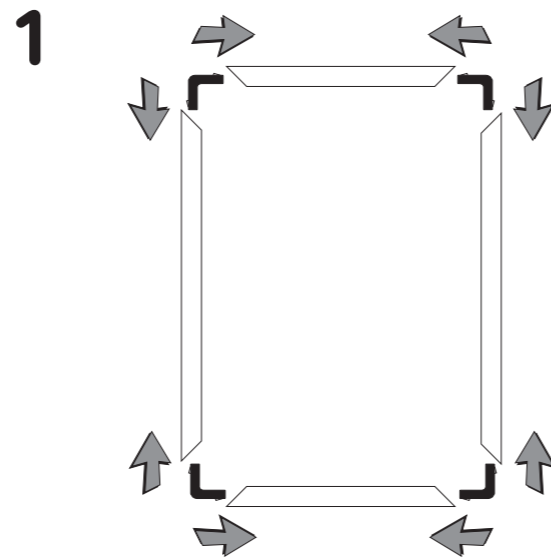
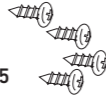
n. 6 viti  
Ø 4 x 35



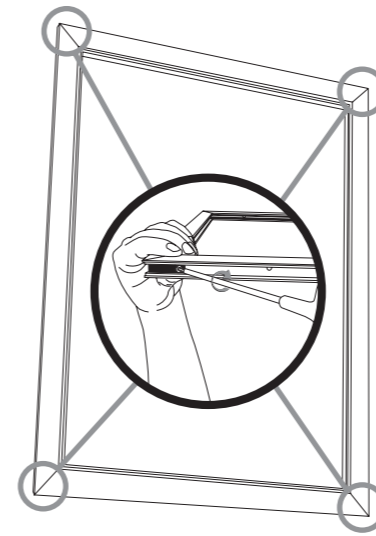
n. 6 fischer Ø 6



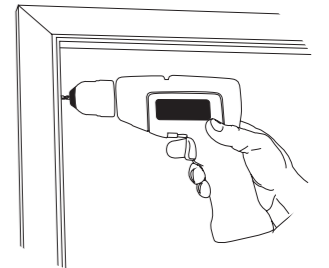
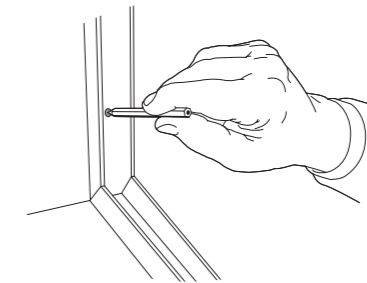
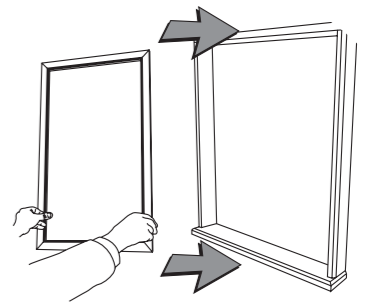
n. 4 viti  
Ø 3,5 x 9,5



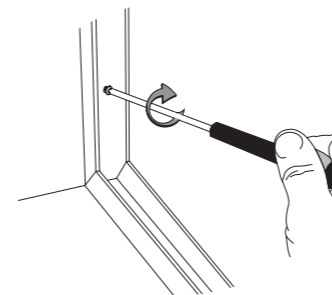
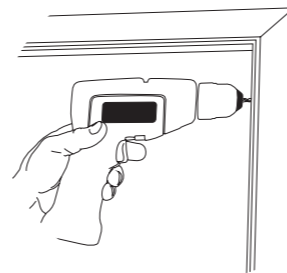
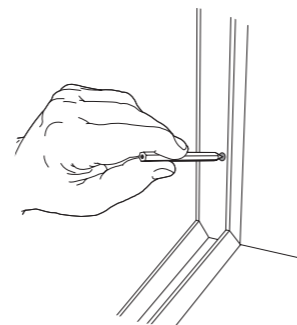
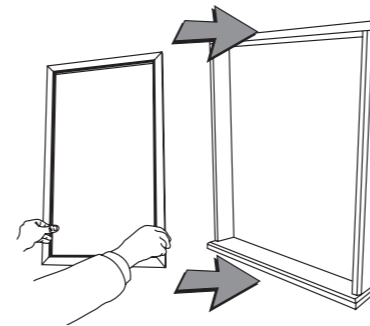
1  
Montare il telaio con gli appositi angolari.  
Dopo aver assemblato il telaio fissarlo con le apposite viti.



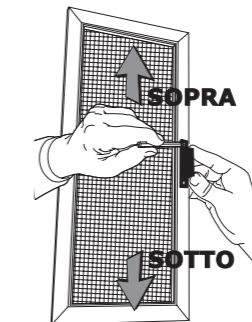
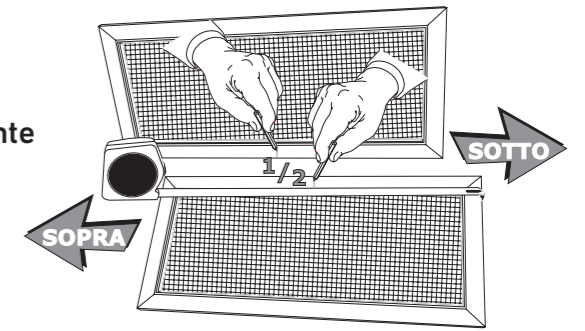
2  
Posizionare il telaio  
all'interno della finestra  
Segnare i  
punti di fissaggio.  
Forare il telaio.



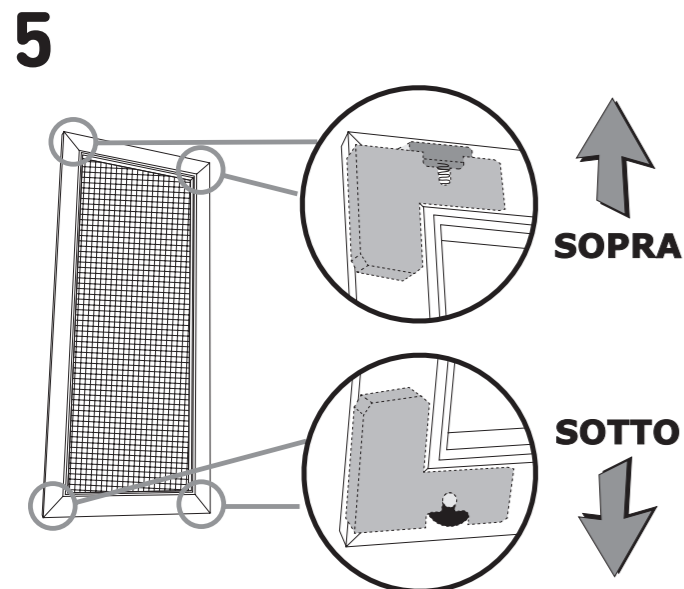
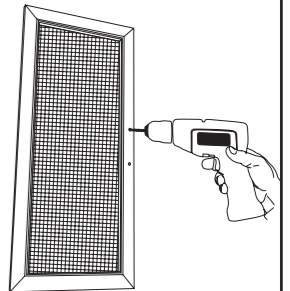
3  
Inserire di nuovo il telaio  
segnare i fori che saranno  
eseguiti sul muro e forare.  
Fissare il telaio.



4  
Segnare la metà  
dell'altezza delle ante  
dal lato interno

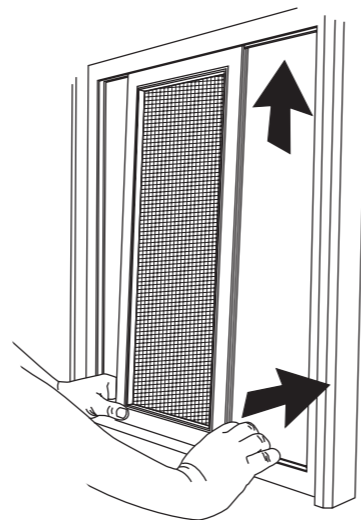
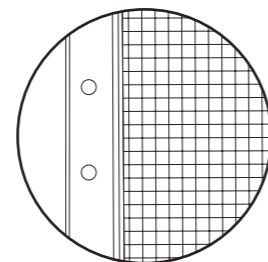


Posizionare le  
maniglie, segnare  
e forare l'anta per il  
successivo fissaggio  
delle maniglie



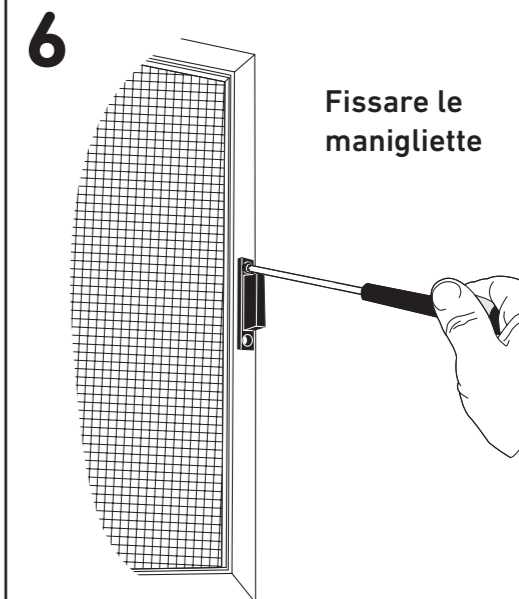
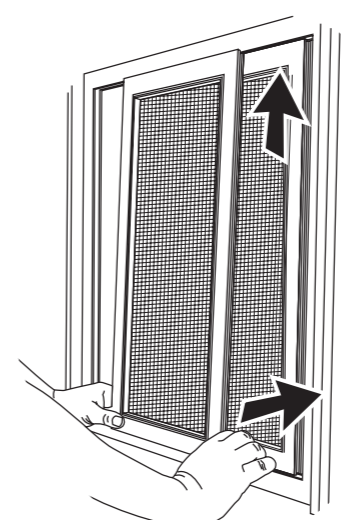
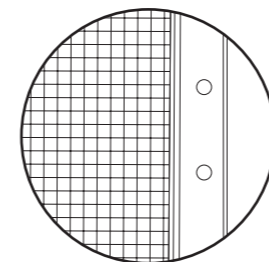
5  
Montare la prima anta  
sul binario più esterno,  
fare pressione dal lato  
frizione (SOPRA) e  
innestare dal lato  
rotella (SOTTO).

Con i fori maniglia a Sx



Montare la seconda  
anta sul binario più  
interno, fare pressione  
dal lato frizione  
(SOPRA) e innestare  
dal lato rotella (SOTTO).

Con i fori maniglia a Dx



6  
Fissare le  
maniglie